

EMBRY-RIDDLE AERONAUTICAL UNIVERSITY

FACULTY/STAFF BY CAMPUS

FACULTY, STAFF & STUDENT EMPLOYEES

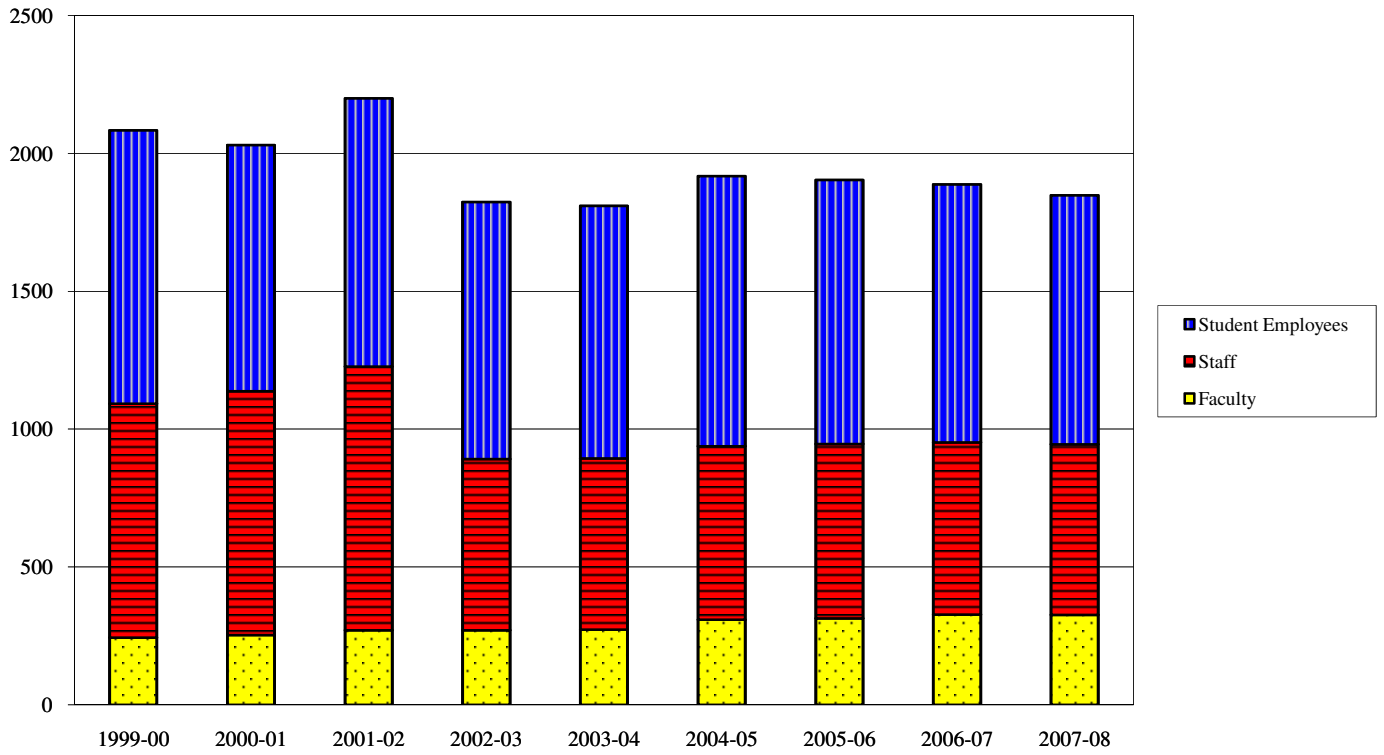
Daytona Beach Campus	2008-09	2007-08	2006-07	2005-06	2004-05	2003-04	2002-03	2001-02	2000-01	1999-00
Faculty	322	327	328	314	310	274	271	272	254	245
Staff	656	619	625	633	629	621	622	956	884	848
Student Employees	926	903	935	957	979	916	932	972	893	992
Total	1904	1849	1888	1904	1918	1811	1825	2200	2031	2085
Prescott Campus	2008-09	2007-08	2006-07	2005-06	2004-05	2003-04	2002-03	2001-02	2000-01	1999-00
Faculty	130	130	124	114	106	113	110	113	105	94
Staff	294	267	278	269	280	276	336	319	275	238
Student Employees	259	258	330	312	276	304	334	291	280	302
Total	683	655	732	695	662	693	780	723	660	634
Worldwide	2008-09	2007-08	2006-07	2005-06	2004-05	2003-04	2002-03	2001-02	2000-01	1999-00
Faculty	2692	2340	2496	2104	3872	3499	3103	2947	2836	2892
Staff	407	405	407	429	415	369	355	258	257	255
Total	3099	2745	2903	2533	4287	3868	3458	3205	3093	3147
University Administration	2008-09	2007-08	2006-07	2005-06	2004-05	2003-04	2002-03	2001-02	2000-01	1999-00
Staff	221	222	288	324	322	331	264	-	-	-
Total	221	222	288	324	322	331	264	-	-	-

NOTES:

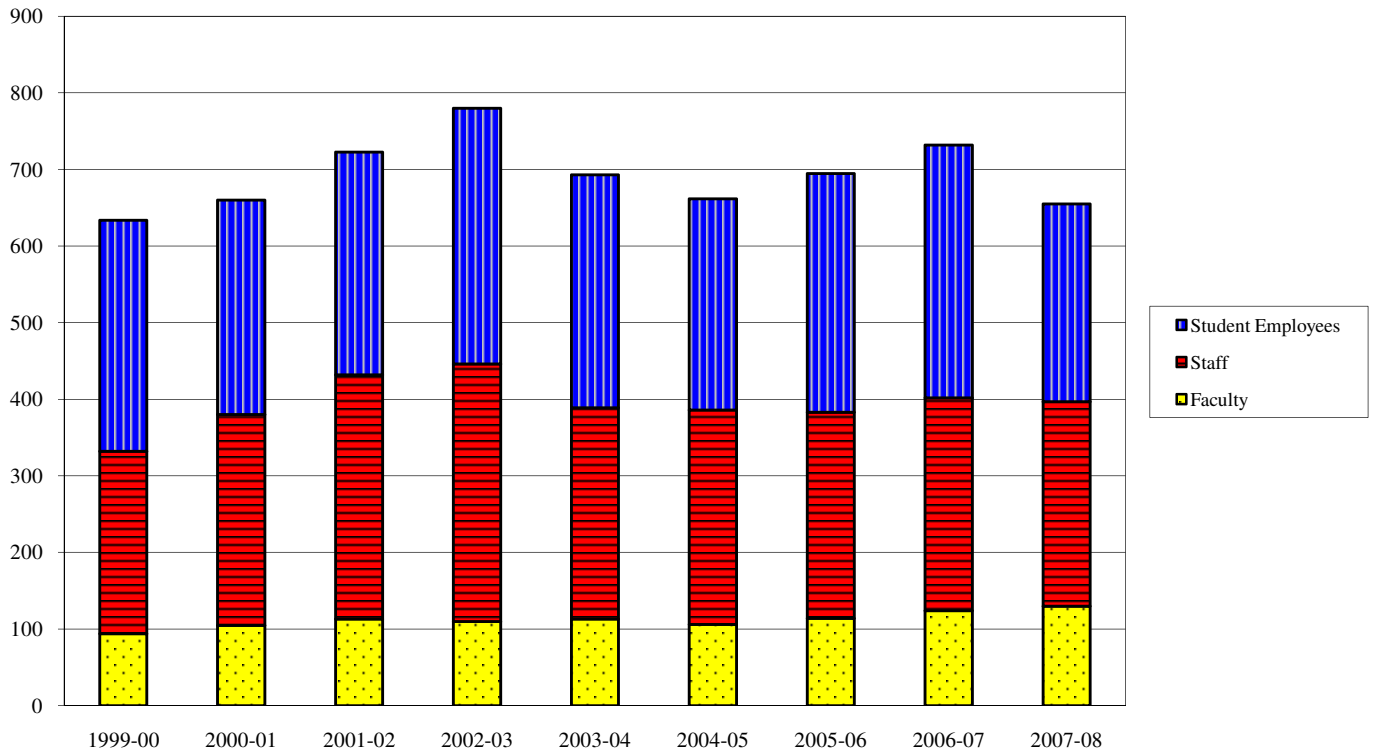
1. Worldwide part-time faculty include the entire pool of faculty--all faculty may not be currently teaching.
2. Flight Instructors are counted as staff.
3. Some staff also teach and are included in both the faculty and staff counts.
4. Prior to 2002-03, staff identified as University Administration were grouped with other campuses.
5. Beginning in 2003-04, Affiliate Operations and FAA-Palm Coast staff are included with University Administration

SOURCE: Office of Institutional Research

**EMBRY-RIDDLE AERONAUTICAL UNIVERSITY
FACULTY, STAFF & STUDENT EMPLOYEES
Daytona Beach Campus**



**EMBRY-RIDDLE AERONAUTICAL UNIVERSITY
FACULTY, STAFF & STUDENT EMPLOYEES
Prescott Campus**



EMBRY-RIDDLE AERONAUTICAL UNIVERSITY
FACULTY, STAFF & STUDENT EMPLOYEES
Worldwide

