

**EMBRY-RIDDLE AERONAUTICAL UNIVERSITY
RETENTION - RESIDENTIAL CAMPUSES**

FIRST-TIME STUDENTS: FOUR-SIX YEAR GRADUATION RATES -- BY DEGREE PROGRAM

Daytona Beach Campus		Cohort:	2002	2001	2000	1999	1998	1997	1996	1995
College of Arts & Sciences										
Aerospace Studies	Initial Headcount:		19	32	21	45	58	22	18	14
	% Graduated from ERAU within Four Years		42%	38%	38%	24%	14%	23%	22%	21%
	% Graduated from ERAU within Five Years		--	66%	48%	36%	28%	27%	33%	36%
	% Graduated from ERAU within Six Years		--	--	52%	36%	33%	36%	33%	36%
Communication	Initial Headcount:		5	6	4	6	1	0	0	0
	% Graduated from ERAU within Four Years		40%	50%	100%	50%	100%	--	--	--
	% Graduated from ERAU within Five Years		--	67%	100%	67%	100%	--	--	--
	% Graduated from ERAU within Six Years		--	--	100%	67%	100%	--	--	--
Engineering Physics	Initial Headcount:		46	22	29	53	47	31	35	43
	% Graduated from ERAU within Four Years		13%	23%	52%	30%	32%	26%	17%	5%
	% Graduated from ERAU within Five Years		--	73%	83%	59%	57%	61%	63%	51%
	% Graduated from ERAU within Six Years		--	--	86%	60%	62%	61%	63%	56%
Human Factors Psych	Initial Headcount:		7	9	3	5	4	0	0	0
	% Graduated from ERAU within Four Years		43%	0%	67%	60%	75%	--	--	--
	% Graduated from ERAU within Five Years		--	11%	100%	60%	75%	--	--	--
	% Graduated from ERAU within Six Years		--	--	100%	60%	75%	--	--	--
College of Aviation										
Aeronautical Science	Initial Headcount:		365	456	396	393	374	460	314	276
	% Graduated from ERAU within Four Years		52%	45%	44%	47%	42%	26%	26%	26%
	% Graduated from ERAU within Five Years		--	59%	59%	65%	58%	43%	48%	47%
	% Graduated from ERAU within Six Years		--	--	63%	68%	61%	50%	52%	52%
Aeronautical Systems Maint	Initial Headcount:		13	15	0	0	0	0	0	0
	% Graduated from ERAU within Four Years		8%	20%	--	--	--	--	--	--
	% Graduated from ERAU within Five Years		--	40%	--	--	--	--	--	--
	% Graduated from ERAU within Six Years		--	--	--	--	--	--	--	--
Aeronautics	Initial Headcount:		0	0	0	0	0	5	1	0
	% Graduated from ERAU within Four Years		--	--	--	--	--	80%	100%	--
	% Graduated from ERAU within Five Years		--	--	--	--	--	80%	100%	--
	% Graduated from ERAU within Six Years		--	--	--	--	--	80%	100%	--
Aerospace Electronics	Initial Headcount:		5	4	0	0	0	0	0	0
	% Graduated from ERAU within Four Years		--	0%	--	--	--	--	--	--
	% Graduated from ERAU within Five Years		--	0%	--	--	--	--	--	--
	% Graduated from ERAU within Six Years		--	--	--	--	--	--	--	--
Air Traffic Mgmt	Initial Headcount:		13	17	1	0	0	0	0	0
	% Graduated from ERAU within Four Years		62%	53%	0%	--	--	--	--	--
	% Graduated from ERAU within Five Years		--	65%	0%	--	--	--	--	--
	% Graduated from ERAU within Six Years		--	--	0%	--	--	--	--	--
Applied Meteorology	Initial Headcount:		10	16	7	0	0	0	0	0
	% Graduated from ERAU within Four Years		40%	56%	43%	--	--	--	--	--
	% Graduated from ERAU within Five Years		--	80%	86%	--	--	--	--	--
	% Graduated from ERAU within Six Years		--	--	86%	--	--	--	--	--
Aviation Technology*	Initial Headcount:		0	0	17	28	31	32	23	44
	% Graduated from ERAU within Four Years		--	--	18%	18%	7%	9%	9%	16%
	% Graduated from ERAU within Five Years		--	--	41%	32%	39%	34%	22%	27%
	% Graduated from ERAU within Six Years		--	--	47%	46%	52%	34%	26%	30%

Daytona Beach Campus		Cohort:	2002	2001	2000	1999	1998	1997	1996	1995
Safety Science	Initial Headcount:		5	4	2	0	0	0	0	0
	% Graduated from ERAU within Four Years		0%	75%	50%	--	--	--	--	--
	% Graduated from ERAU within Five Years		--	75%	50%	--	--	--	--	--
	% Graduated from ERAU within Six Years		--	--	50%	--	--	--	--	--
College of Business										
Aviation Business Admin	Initial Headcount:		25	37	26	41	47	62	42	29
	% Graduated from ERAU within Four Years		40%	54%	42%	46%	49%	31%	17%	24%
	% Graduated from ERAU within Five Years		--	58%	62%	56%	66%	37%	31%	48%
	% Graduated from ERAU within Six Years		--	--	62%	56%	68%	40%	38%	55%
Aviation Maintenance Mgmt*	Initial Headcount:		0	0	5	6	7	17	9	13
	% Graduated from ERAU within Four Years		--	--	0%	50%	0%	41%	0%	23%
	% Graduated from ERAU within Five Years		--	--	20%	50%	14%	53%	22%	23%
	% Graduated from ERAU within Six Years		--	--	20%	50%	14%	53%	33%	39%
Mgmt of Tech Operations*	Initial Headcount:		0	0	0	1	0	2	0	0
	% Graduated from ERAU within Four Years		--	--	--	100%	--	50%	--	--
	% Graduated from ERAU within Five Years		--	--	--	100%	--	50%	--	--
	% Graduated from ERAU within Six Years		--	--	--	100%	--	50%	--	--
College of Engineering										
Aerospace Engineering	Initial Headcount:		283	301	220	261	241	240	166	121
	% Graduated from ERAU within Four Years		22%	17%	19%	17%	20%	9%	13%	12%
	% Graduated from ERAU within Five Years		--	55%	54%	51%	56%	38%	42%	40%
	% Graduated from ERAU within Six Years		--	--	59%	57%	63%	48%	51%	46%
Aircraft Engineering Tech	Initial Headcount:		14	15	19	16	16	25	11	14
	% Graduated from ERAU within Four Years		43%	20%	16%	19%	25%	12%	0%	29%
	% Graduated from ERAU within Five Years		--	40%	32%	38%	44%	28%	36%	36%
	% Graduated from ERAU within Six Years		--	--	37%	50%	56%	32%	36%	43%
Avionics Engineering Tech	Initial Headcount:		2	3	5	3	9	11	8	7
	% Graduated from ERAU within Four Years		0%	0%	40%	33%	33%	9%	0%	29%
	% Graduated from ERAU within Five Years		--	0%	80%	100%	56%	46%	0%	29%
	% Graduated from ERAU within Six Years		--	--	80%	100%	56%	46%	25%	43%
Civil Engineering	Initial Headcount:		8	15	4	13	13	20	16	10
	% Graduated from ERAU within Four Years		25%	27%	0%	23%	8%	20%	6%	0%
	% Graduated from ERAU within Five Years		--	40%	75%	46%	23%	55%	50%	20%
	% Graduated from ERAU within Six Years		--	--	75%	46%	31%	60%	50%	30%
Computer Engineering	Initial Headcount:		12	12	8	13	10	4	0	0
	% Graduated from ERAU within Four Years		0%	8%	13%	33%	10%	50%	--	--
	% Graduated from ERAU within Five Years		--	42%	13%	50%	40%	75%	--	--
	% Graduated from ERAU within Six Years		--	--	13%	50%	40%	100%	--	--
Computer Science	Initial Headcount:		24	23	26	31	43	50	38	51
	% Graduated from ERAU within Four Years		13%	4%	27%	19%	33%	28%	11%	26%
	% Graduated from ERAU within Five Years		--	22%	50%	36%	51%	46%	34%	51%
	% Graduated from ERAU within Six Years		--	--	58%	36%	54%	46%	45%	53%
Still Exploring (Engr)	Initial Headcount:		9	13	4	14	7	16	16	16
	% Graduated from ERAU within Four Years		22%	23%	50%	7%	29%	13%	6%	6%
	% Graduated from ERAU within Five Years		--	62%	75%	29%	43%	38%	38%	25%
	% Graduated from ERAU within Six Years		--	--	75%	29%	57%	38%	44%	38%

Prescott Campus		Cohort:	2002	2001	2000	1999	1998	1997	1996	1995
College of Arts & Sciences										
Aerospace Studies	Initial Headcount:		9	7	4	2	2	4	1	1
	% Graduated from ERAU within Four Years		33%	43%	50%	0%	0%	0%	0%	0%
	% Graduated from ERAU within Five Years		--	43%	50%	0%	0%	0%	0%	100%
	% Graduated from ERAU within Six Years		--	--	50%	0%	0%	25%	0%	100%
Computer Science	Initial Headcount:		8	12	13	14	7	16	29	26
	% Graduated from ERAU within Four Years		50%	25%	8%	43%	43%	44%	41%	42%
	% Graduated from ERAU within Five Years		--	33%	23%	57%	43%	50%	48%	62%
	% Graduated from ERAU within Six Years		--	--	23%	64%	71%	50%	48%	62%
Science, Tech, & Globalization	Initial Headcount:		14	19	9	7	17	8	0	0
	% Graduated from ERAU within Four Years		21%	32%	44%	14%	29%	50%	--	--
	% Graduated from ERAU within Five Years		--	53%	78%	29%	29%	50%	--	--
	% Graduated from ERAU within Six Years		--	--	78%	29%	29%	50%	--	--
College of Aviation										
Aeronautical Science	Initial Headcount:		169	197	203	178	180	166	130	134
	% Graduated from ERAU within Four Years		36%	30%	39%	36%	36%	34%	36%	44%
	% Graduated from ERAU within Five Years		--	47%	54%	58%	50%	47%	54%	53%
	% Graduated from ERAU within Six Years		--	--	57%	64%	56%	50%	58%	55%
Aeronautics	Initial Headcount:		0	0	0	1	1	0	0	0
	% Graduated from ERAU within Four Years		--	--	--	0%	0%	--	--	--
	% Graduated from ERAU within Five Years		--	--	--	0%	0%	--	--	--
	% Graduated from ERAU within Six Years		--	--	--	0%	0%	--	--	--
College of Engineering										
Aerospace Engineering	Initial Headcount:		90	106	93	84	85	99	101	83
	% Graduated from ERAU within Four Years		13%	14%	15%	20%	19%	10%	18%	17%
	% Graduated from ERAU within Five Years		--	49%	59%	52%	57%	49%	53%	47%
	% Graduated from ERAU within Six Years		--	--	62%	58%	60%	53%	59%	48%
Computer Engineering	Initial Headcount:		4	14	9	8	6	7	0	0
	% Graduated from ERAU within Four Years		25%	21%	22%	13%	50%	29%	--	--
	% Graduated from ERAU within Five Years		--	21%	22%	13%	50%	29%	--	--
	% Graduated from ERAU within Six Years		--	--	22%	25%	67%	29%	--	--
Electrical Engineering	Initial Headcount:		12	16	9	15	9	21	30	32
	% Graduated from ERAU within Four Years		33%	0%	0%	13%	11%	24%	7%	3%
	% Graduated from ERAU within Five Years		--	31%	67%	60%	89%	57%	57%	50%
	% Graduated from ERAU within Six Years		--	--	67%	60%	89%	62%	57%	53%
Still Exploring (Engr)	Initial Headcount:		1	2	1	1	4	4	1	2
	% Graduated from ERAU within Four Years		0%	50%	0%	0%	0%	0%	0%	0%
	% Graduated from ERAU within Five Years		--	100%	0%	100%	25%	25%	100%	0%
	% Graduated from ERAU within Six Years		--	--	0%	100%	50%	25%	100%	0%

* Discontinued program.

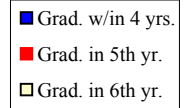
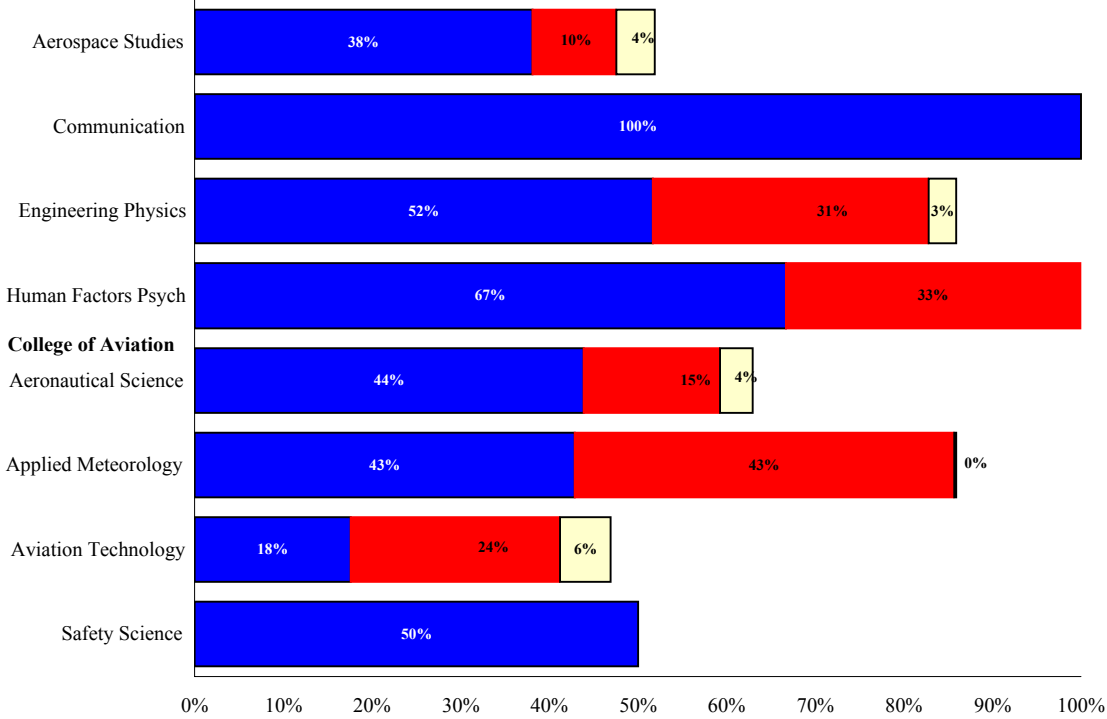
Notes:

1. Cohort represents all first-time, full-time, bachelor's degree-seeking students who entered in a fall term in the designated program.
2. % represents those who graduated from ERAU. Students may have graduated from a different program than they originally entered. For further details, see the "First-time Students: Retention, Attrition, Change of Program, and Graduation -- By Degree Program" links.

Source: Office of Institutional Research

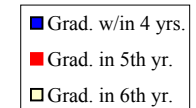
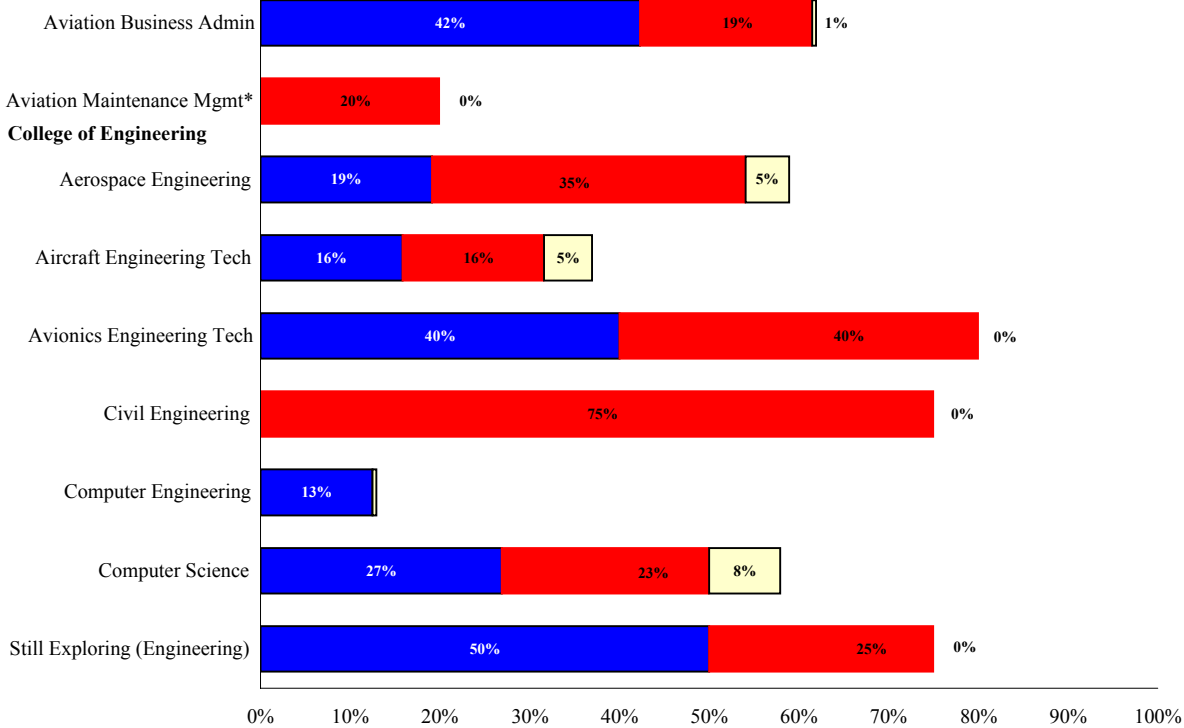
EMBRY-RIDDLE AERONAUTICAL UNIVERSITY
FIRST-TIME STUDENTS: FOUR-SIX YEAR GRADUATION RATES -- BY DEGREE PROGRAM
 2000 Cohort, Daytona Beach Campus
 College of Arts & Sciences and College of Aviation

College of Arts & Sciences



EMBRY-RIDDLE AERONAUTICAL UNIVERSITY
FIRST-TIME STUDENTS: FOUR-SIX YEAR GRADUATION RATES -- BY DEGREE PROGRAM
 2000 Cohort, Daytona Beach Campus
 College of Business & College of Engineering

College of Business



EMBRY-RIDDLE AERONAUTICAL UNIVERSITY
FIRST-TIME STUDENTS: FOUR-SIX YEAR GRADUATION RATES -- BY DEGREE PROGRAM
 2000 Cohort, Prescott Campus
 All Colleges

