

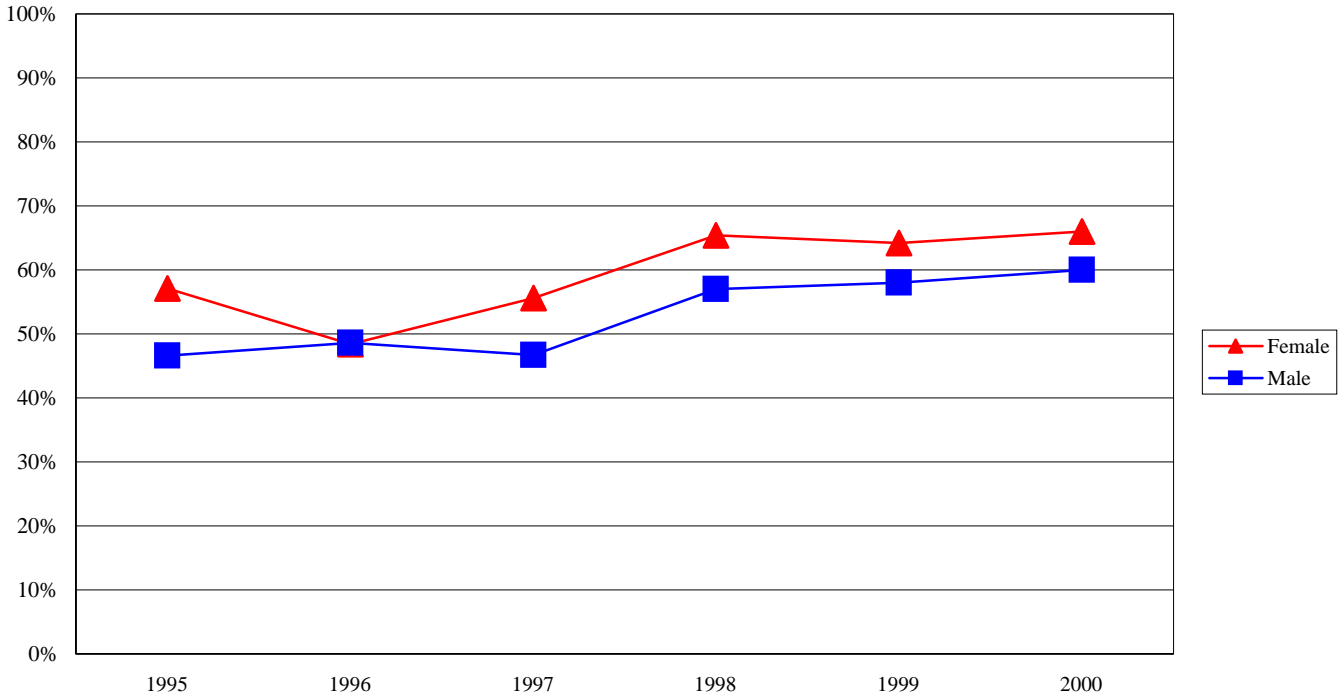
EMBRY-RIDDLE AERONAUTICAL UNIVERSITY
RETENTION - RESIDENTIAL CAMPUSES
FIRST-TIME STUDENTS: FOUR-SIX YEAR GRADUATION RATES -- BY GENDER

Daytona Beach Campus		Cohort:	2002	2001	2000	1999	1998	1997	1996	1995
Female	Initial Headcount:		148	159	124	151	127	135	95	98
	% Graduated within Four Years		46%	38%	44%	40%	39%	22%	13%	24%
	% Graduated within Five Years		--	62%	64%	60%	60%	48%	42%	51%
	% Graduated within Six Years		--	--	66%	64%	65%	56%	48%	57%
Male	Initial Headcount:		724	855	673	776	780	860	603	539
	% Graduated within Four Years		33%	32%	33%	32%	30%	21%	20%	19%
	% Graduated within Five Years		--	55%	56%	55%	53%	41%	43%	41%
	% Graduated within Six Years		--	--	60%	58%	57%	47%	49%	47%
Prescott Campus		Cohort:	2002	2001	2000	1999	1998	1997	1996	1995
Female	Initial Headcount:		52	73	45	40	47	54	52	42
	% Graduated within Four Years		31%	27%	29%	40%	36%	35%	35%	26%
	% Graduated within Five Years		--	48%	47%	60%	55%	54%	58%	50%
	% Graduated within Six Years		--	--	49%	65%	57%	56%	62%	50%
Male	Initial Headcount:		255	300	296	270	264	272	246	238
	% Graduated within Four Years		28%	23%	30%	28%	29%	24%	25%	32%
	% Graduated within Five Years		--	45%	55%	53%	50%	46%	52%	52%
	% Graduated within Six Years		--	--	58%	59%	56%	50%	56%	53%

NOTE: Cohort represents first-time, full-time, bachelor's degree-seeking students who entered in each fall term.

SOURCE: Office of Institutional Research

**EMBRY-RIDDLE AERONAUTICAL UNIVERSITY
RETENTION - RESIDENTIAL CAMPUSES
FIRST-TIME STUDENTS: SIX-YEAR GRADUATION RATES -- BY GENDER
Daytona Beach Campus**



**EMBRY-RIDDLE AERONAUTICAL UNIVERSITY
RETENTION - RESIDENTIAL CAMPUSES
FIRST-TIME STUDENTS: SIX-YEAR GRADUATION RATES -- BY GENDER
Prescott Campus**

