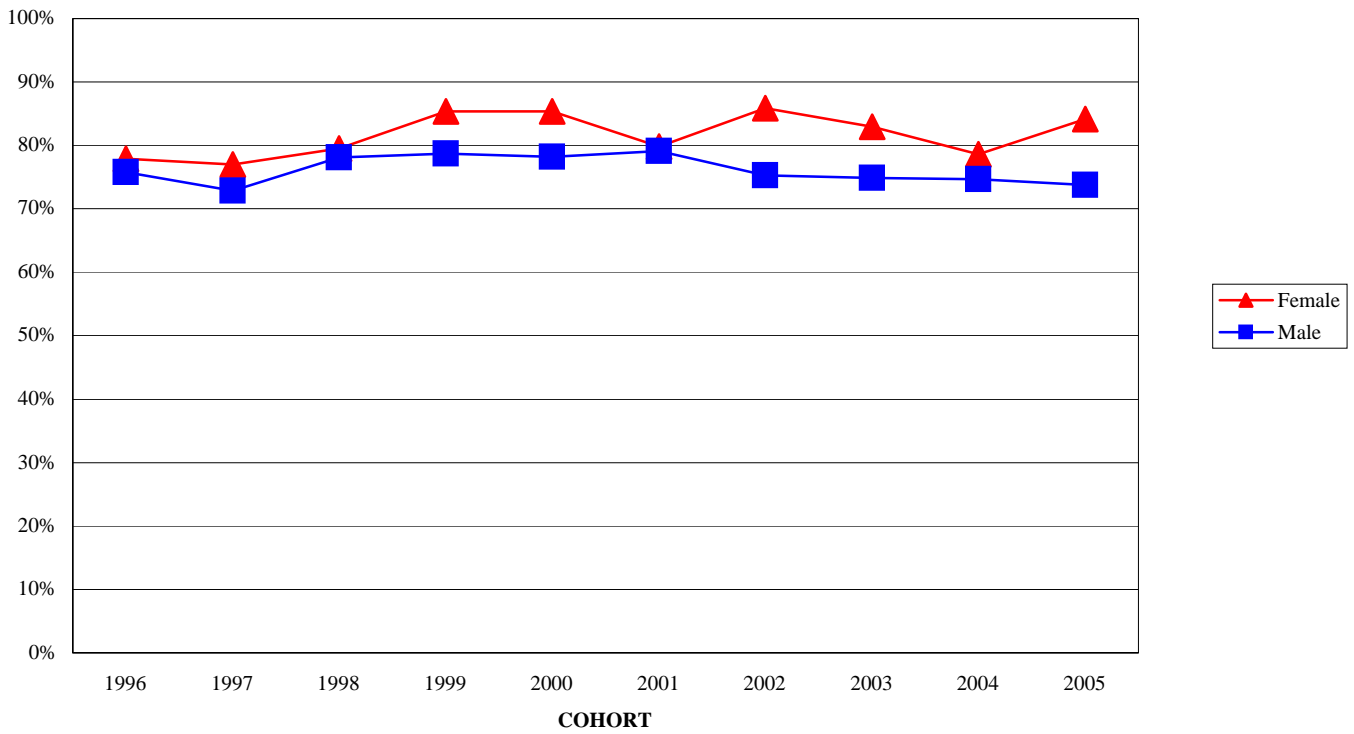


**EMBRY-RIDDLE AERONAUTICAL UNIVERSITY**  
**RETENTION - RESIDENTIAL CAMPUSES**  
**FIRST-TIME STUDENTS: FIRST-YEAR RETENTION RATES -- BY GENDER**

<b>Daytona Beach Campus</b>		<b>Cohort:</b>	<b>2005</b>	<b>2004</b>	<b>2003</b>	<b>2002</b>	<b>2001</b>	<b>2000</b>	<b>1999</b>	<b>1998</b>	<b>1997</b>	<b>1996</b>
<b>Female</b>	Initial Headcount:		152	140	164	149	159	124	151	127	135	95
	% Returned		84%	79%	83%	86%	80%	85%	85%	80%	77%	78%
<b>Male</b>	Initial Headcount:		824	795	847	724	857	675	778	781	862	603
	% Returned		74%	75%	75%	75%	79%	78%	79%	78%	73%	76%
<b>Prescott Campus</b>		<b>Cohort:</b>	<b>2005</b>	<b>2004</b>	<b>2003</b>	<b>2002</b>	<b>2001</b>	<b>2000</b>	<b>1999</b>	<b>1998</b>	<b>1997</b>	<b>1996</b>
<b>Female</b>	Initial Headcount:		54	76	60	52	73	45	40	47	54	52
	% Returned		74%	82%	82%	83%	69%	80%	80%	85%	78%	79%
<b>Male</b>	Initial Headcount:		304	293	243	255	300	297	270	264	274	246
	% Returned		73%	78%	77%	73%	69%	76%	81%	79%	67%	72%

Note: Cohort represents all first-time, full-time, bachelor's degree-seeking students who entered in each fall term.  
Source: Office of Institutional Research

**EMBRY-RIDDLE AERONAUTICAL UNIVERSITY  
RETENTION - RESIDENTIAL CAMPUSES  
FIRST-TIME STUDENTS: FIRST-YEAR RETENTION RATES -- BY GENDER  
Daytona Beach Campus**



**EMBRY-RIDDLE AERONAUTICAL UNIVERSITY  
RETENTION - RESIDENTIAL CAMPUSES  
FIRST-TIME STUDENTS: FIRST-YEAR RETENTION RATES -- BY GENDER  
Prescott Campus**

