

EMBRY-RIDDLE AERONAUTICAL UNIVERSITY
RETENTION - RESIDENTIAL CAMPUSES
FIRST-TIME STUDENTS: FIRST-YEAR RETENTION RATES -- BY ETHNICITY

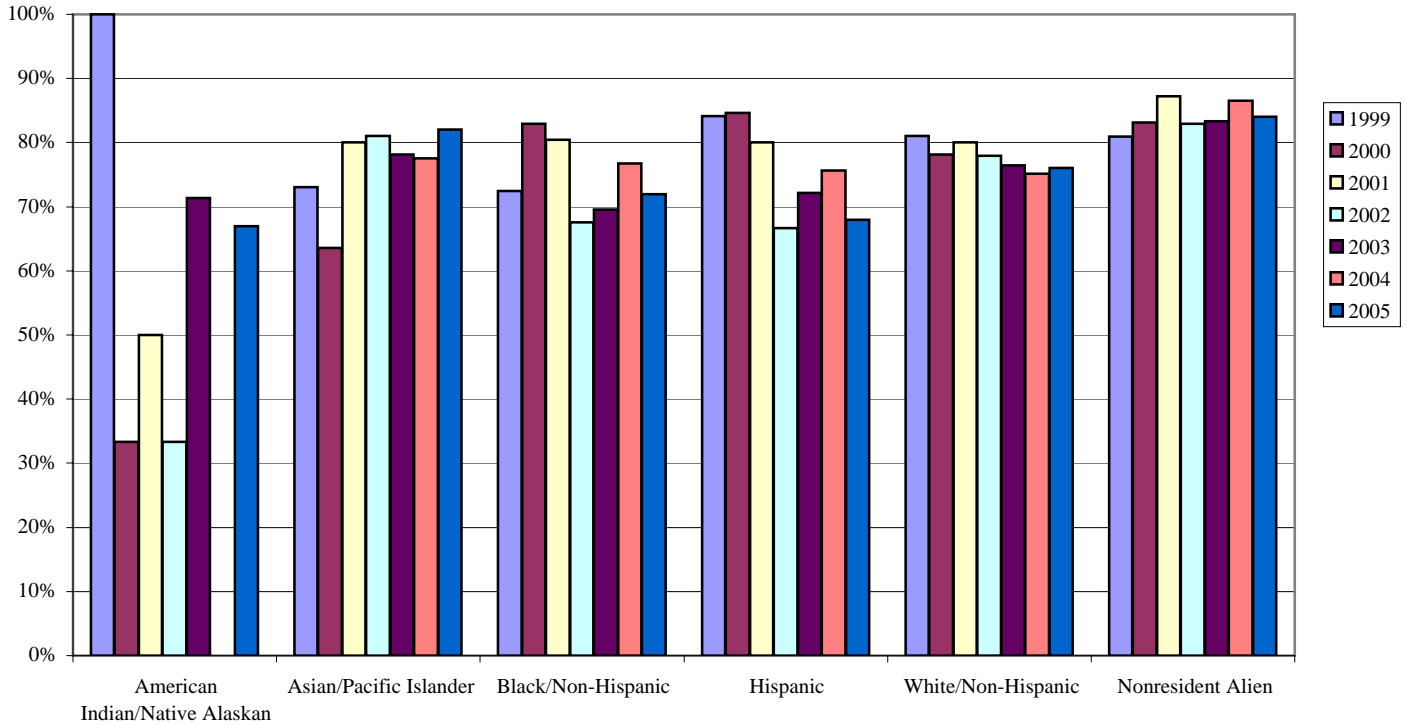
Daytona Beach Campus		Cohort:	2005	2004	2003	2002	2001	2000	1999	1998	1997	1996
American Indian/Native Alaskan	Initial Headcount:		3	0	7	3	8	3	3	9	2	5
	% Returned		67%	0%	71%	33%	50%	33%	100%	89%	100%	60%
Asian/Pacific Islander	Initial Headcount:		60	40	32	42	35	22	26	32	31	39
	% Returned		82%	78%	78%	81%	80%	64%	73%	81%	87%	59%
Black/Non-Hispanic	Initial Headcount:		57	43	46	34	46	41	40	49	58	40
	% Returned		72%	77%	70%	68%	80%	83%	73%	61%	67%	70%
Hispanic	Initial Headcount:		76	82	72	45	60	26	44	58	77	47
	% Returned		68%	76%	72%	67%	80%	85%	84%	71%	69%	79%
White/Non-Hispanic	Initial Headcount:		656	647	686	634	756	604	679	627	674	467
	% Returned		76%	75%	76%	78%	80%	78%	81%	80%	74%	76%
Nonresident Alien	Initial Headcount:		57	37	42	35	47	59	68	51	85	68
	% Returned		84%	87%	83%	83%	87%	83%	81%	86%	72%	82%
Prescott Campus		Cohort:	2005	2004	2003	2002	2001	2000	1999	1998	1997	1996
American Indian/Native Alaskan	Initial Headcount:		7	2	2	2	5	2	4	3	2	4
	% Returned		57%	0%	50%	0%	60%	100%	100%	100%	50%	50%
Asian/Pacific Islander	Initial Headcount:		28	26	13	29	22	19	19	15	18	17
	% Returned		75%	81%	100%	76%	55%	90%	68%	87%	67%	88%
Black/Non-Hispanic	Initial Headcount:		5	15	7	8	4	4	4	4	5	7
	% Returned		60%	67%	71%	75%	50%	100%	50%	50%	60%	57%
Hispanic	Initial Headcount:		30	30	15	19	23	15	17	8	18	11
	% Returned		77%	63%	73%	63%	65%	73%	53%	63%	61%	73%
White/Non-Hispanic	Initial Headcount:		253	228	229	220	287	278	233	246	265	237
	% Returned		75%	80%	77%	76%	70%	76%	84%	81%	69%	73%
Nonresident Alien	Initial Headcount:		3	11	4	10	8	10	12	11	7	6
	% Returned		100%	82%	100%	70%	63%	60%	83%	91%	86%	100%

NOTES:

1. Cohort represents first-time, full-time, bachelor's degree-seeking students who entered in each fall term.
2. Uses IPEDS definitions (international students are classified as Nonresident Aliens rather than their actual ethnicity).

SOURCE: Office of Institutional Research

**EMBRY-RIDDLE AERONAUTICAL UNIVERSITY
RETENTION - RESIDENTIAL CAMPUSES
FIRST-TIME STUDENTS: FIRST-YEAR RETENTION RATES -- BY ETHNICITY
Daytona Beach Campus**



**EMBRY-RIDDLE AERONAUTICAL UNIVERSITY
RETENTION - RESIDENTIAL CAMPUSES
FIRST-TIME STUDENTS: FIRST-YEAR RETENTION RATES -- BY ETHNICITY
Prescott Campus**

