

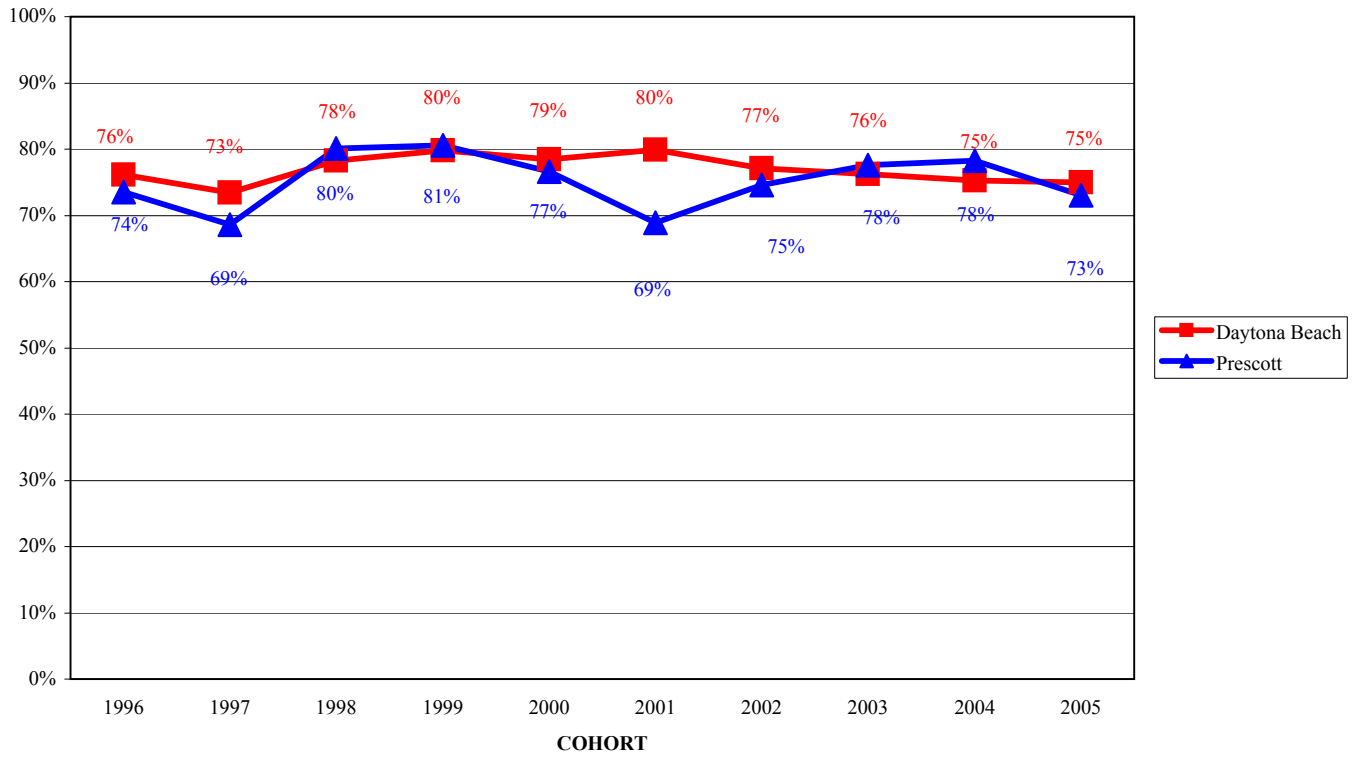
**EMBRY-RIDDLE AERONAUTICAL UNIVERSITY
RETENTION - RESIDENTIAL CAMPUSES
FIRST-TIME STUDENTS: ONE-SIX YEARS AFTER ENTRY**

Daytona Beach Campus	Cohort:	2005	2004	2003	2002	2001	2000	1999	1998	1997	1996
Initial Headcount:		976	935	1011	873	1016	799	929	908	997	698
After One Year	% Returned	75%	75%	76%	77%	80%	79%	80%	78%	73%	76%
	% Graduated	0%	0%	0%	0%	0%	0%	0%	0%	0%	0%
	% Attrited	25%	25%	24%	23%	20%	22%	20%	22%	27%	24%
After Two Years	% Returned	--	64%	65%	67%	69%	66%	67%	67%	62%	65%
	% Graduated	--	0%	0%	0%	0%	0%	0%	0%	0%	0%
	% Attrited	--	36%	35%	33%	31%	34%	33%	32%	38%	35%
After Three Years	% Returned	--	--	59%	62%	63%	63%	61%	61%	53%	59%
	% Graduated	--	--	3%	3%	3%	2%	3%	3%	3%	1%
	% Attrited	--	--	38%	35%	34%	35%	26%	36%	44%	40%
After Four Years	% Returned	--	--	--	25%	30%	27%	29%	30%	30%	34%
	% Graduated	--	--	--	35%	33%	35%	33%	31%	21%	19%
	% Attrited	--	--	--	40%	36%	38%	38%	40%	48%	47%
After Five Years	% Returned	--	--	--	--	6%	5%	7%	6%	8%	9%
	% Graduated	--	--	--	--	56%	57%	56%	54%	42%	43%
	% Attrited	--	--	--	--	38%	38%	38%	40%	50%	48%
After Six Years	% Returned	--	--	--	--	--	2%	3%	2%	4%	3%
	% Graduated	--	--	--	--	--	61%	59%	58%	48%	49%
	% Attrited	--	--	--	--	--	37%	38%	40%	48%	49%
Prescott Campus	Cohort:	2005	2004	2003	2002	2001	2000	1999	1998	1997	1996
Initial Headcount:		358	369	303	307	373	342	310	311	328	298
After One Year	% Returned	73%	78%	78%	75%	69%	77%	81%	80%	69%	74%
	% Graduated	0%	0%	0%	0%	0%	0%	0%	0%	0%	0%
	% Attrited	27%	22%	22%	25%	31%	23%	19%	20%	31%	27%
After Two Years	% Returned	--	69%	65%	65%	63%	67%	73%	70%	61%	65%
	% Graduated	--	0%	0%	0%	0%	0%	0%	1%	0%	0%
	% Attrited	--	31%	35%	35%	38%	33%	27%	30%	39%	35%
After Three Years	% Returned	--	--	60%	61%	55%	61%	65%	61%	55%	62%
	% Graduated	--	--	2%	1%	2%	3%	3%	5%	3%	3%
	% Attrited	--	--	38%	38%	43%	37%	32%	34%	42%	35%
After Four Years	% Returned	--	--	--	28%	29%	26%	33%	29%	25%	33%
	% Graduated	--	--	--	29%	24%	30%	29%	30%	26%	27%
	% Attrited	--	--	--	44%	47%	44%	38%	41%	49%	41%
After Five Years	% Returned	--	--	--	--	7%	5%	6%	10%	5%	5%
	% Graduated	--	--	--	--	46%	54%	54%	51%	47%	53%
	% Attrited	--	--	--	--	48%	41%	40%	39%	48%	42%
After Six Years	% Returned	--	--	--	--	--	2%	2%	3%	3%	2%
	% Graduated	--	--	--	--	--	57%	60%	57%	51%	57%
	% Attrited	--	--	--	--	--	41%	38%	41%	47%	41%

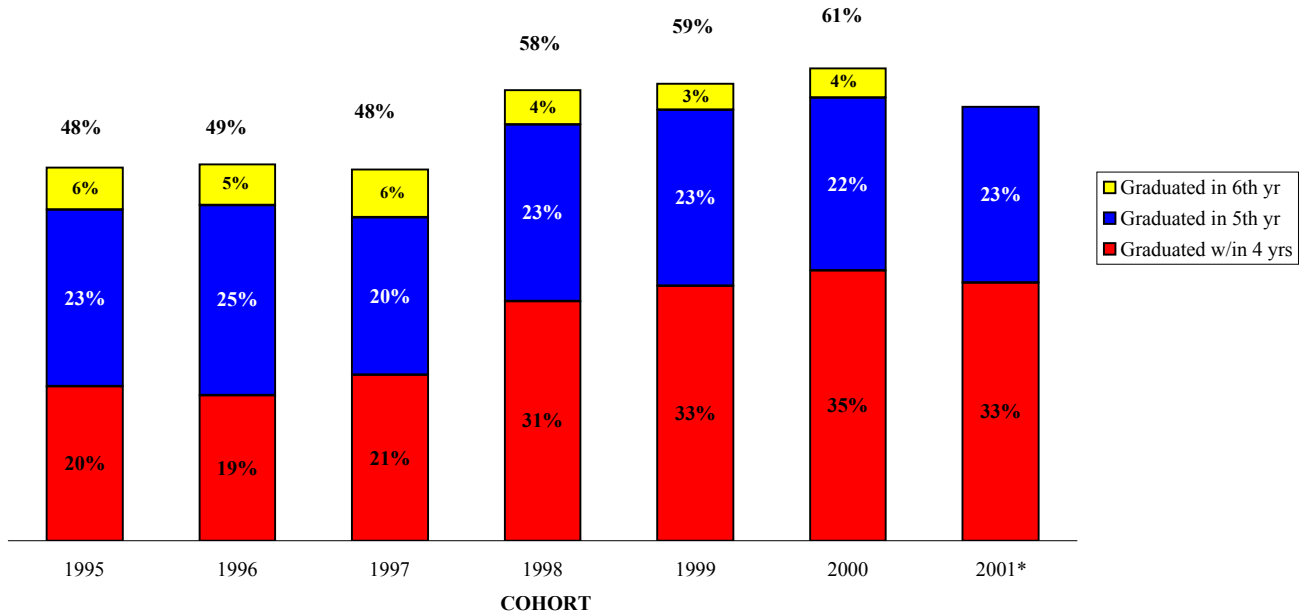
Note: Cohort represents all first-time, full-time, bachelor's degree-seeking students who entered in each fall term.

Source: Office of Institutional Research

EMBRY-RIDDLE AERONAUTICAL UNIVERSITY
RETENTION - RESIDENTIAL CAMPUSES
FIRST-TIME STUDENTS: FIRST-YEAR RETENTION RATES

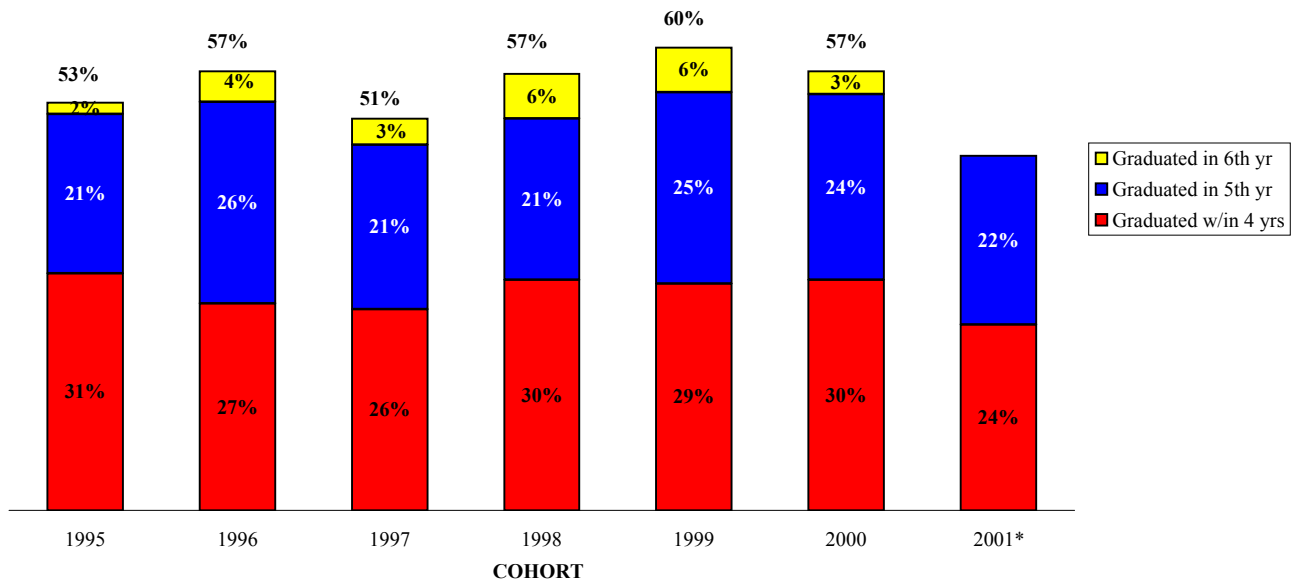


**EMBRY-RIDDLE AERONAUTICAL UNIVERSITY
RETENTION - RESIDENTIAL CAMPUSES
FIRST-TIME STUDENTS: FOUR-, FIVE-, SIX- YEAR GRADUATION RATES
Daytona Beach Campus**



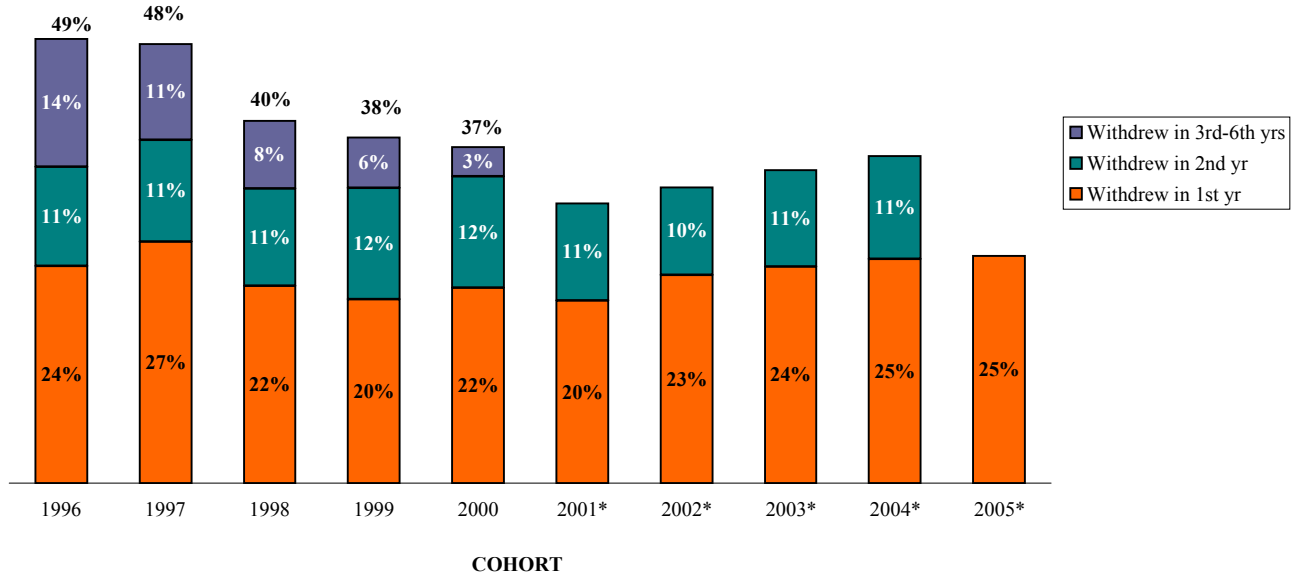
*Incomplete (six years has not elapsed)

**EMBRY-RIDDLE AERONAUTICAL UNIVERSITY
RETENTION - RESIDENTIAL CAMPUSES
FIRST-TIME STUDENTS: FOUR-, FIVE-, SIX- YEAR GRADUATION RATES
Prescott Campus**



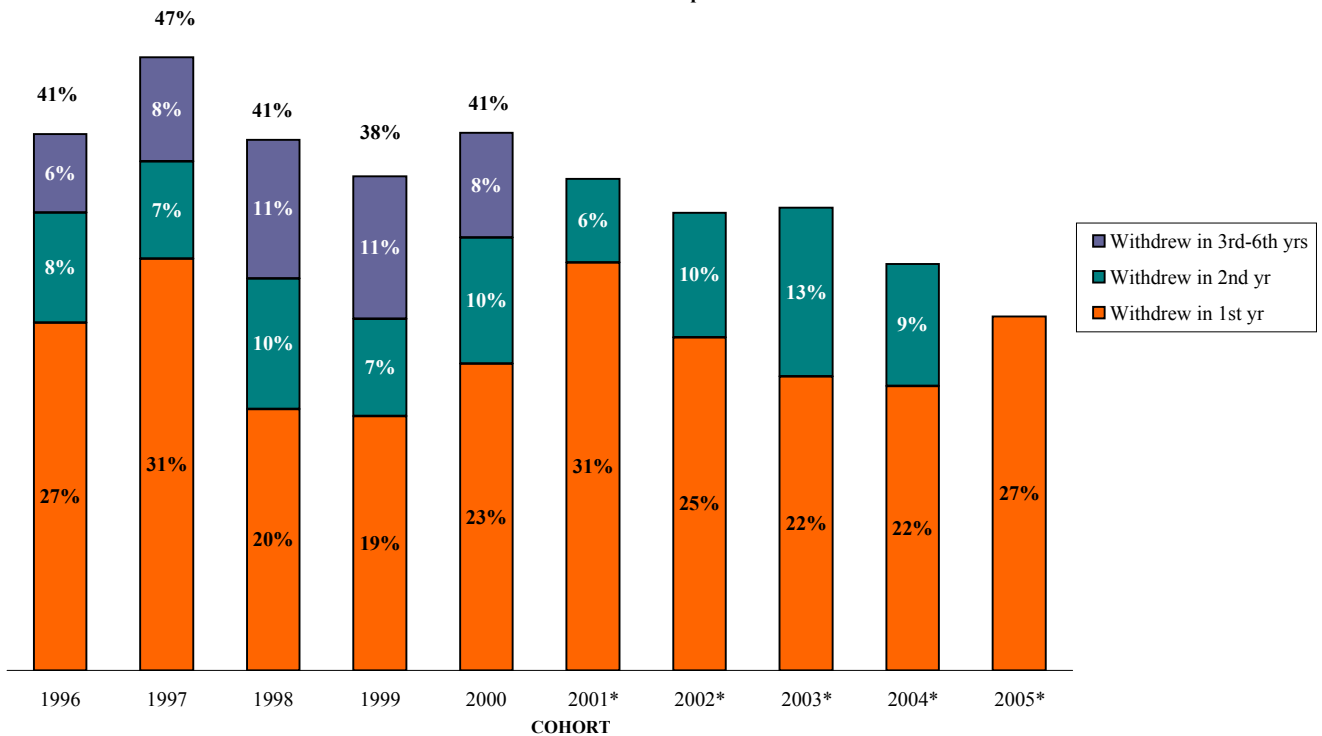
*Incomplete (six years has not elapsed)

**EMBRY-RIDDLE AERONAUTICAL UNIVERSITY
RETENTION - RESIDENTIAL CAMPUSES
FIRST-TIME STUDENTS: FIRST THROUGH SIXTH-YEAR ATTRITION RATES
Daytona Beach Campus**



* Incomplete (six years has not elapsed)

**EMBRY-RIDDLE AERONAUTICAL UNIVERSITY
RETENTION & GRADUATION RATES
FIRST THROUGH SIXTH-YEAR ATTRITION RATES
Prescott Campus**



* Incomplete (six years has not elapsed)