

**EMBRY-RIDDLE AERONAUTICAL UNIVERSITY**  
**ALUMNI PLACEMENT RATES (ONE YEAR AFTER GRADUATION)**  
**OVERALL BY DEGREE LEVEL**

<b>Year of Graduation</b>	<b>2004</b>	<b>2003</b>	<b>2002</b>	<b>2001</b>	<b>2000</b>	<b>1999</b>	<b>1998</b>
<b>Daytona Beach Campus</b>							
<b>Associate's Degrees</b>	(0)	(2)	(3)	(7)	(5)	(6)	(6)
Effective Placement Rate	*	*	100.0%	100.0%	100.0%	100.0%	100.0%
Employment Rate	*	*	92.3%	96.6%	80.0%	100.0%	82.8%
Continuing Education Rate	*	*	7.7%	3.4%	20.0%	0.0%	17.2%
<b>Bachelor's Degrees</b>	(160)	(205)	(148)	(229)	(197)	(195)	(153)
Effective Placement Rate	94.8%	94.5%	88.3%	93.1%	93.2%	93.9%	95.4%
Employment Rate	92.3%	88.6%	82.7%	89.1%	89.2%	92.1%	92.2%
Continuing Education Rate	2.5%	5.9%	5.6%	4.0%	4.0%	1.8%	3.2%
<b>Master's Degrees</b>	(27)	(17)	(17)	(20)	(25)	(22)	(17)
Effective Placement Rate	100.0%	93.8%	100.0%	92.7%	94.3%	89.8%	100.0%
Employment Rate	100.0%	89.1%	91.5%	92.7%	91.9%	89.8%	100.0%
Continuing Education Rate	0.0%	4.7%	8.5%	0%	2.4%	0.0%	0.0%
<b>Campus Total</b>	(187)	(224)	(168)	(256)	(227)	(223)	(176)
Effective Placement Rate	95.3%	94.4%	89.5%	93.3%	93.6%	93.8%	96.2%
Employment Rate	93.1%	88.6%	83.7%	89.7%	89.1%	92.2%	93.0%
Continuing Education Rate	2.2%	5.8%	5.9%	3.7%	4.5%	1.6%	3.2%
<b>Prescott Campus</b>							
<b>Bachelor's Degrees</b>	(81)	(95)	(48)	(92)	(88)	(90)	(81)
Effective Placement Rate	93.2%	96.0%	91.2%	92.6%	92.4%	98.4%	92.2%
Employment Rate	85.5%	83.7%	84.3%	89.1%	92.4%	97.5%	92.2%
Continuing Education Rate	7.7%	12.4%	6.9%	3.5%	0.0%	0.9%	0.0%
<b>Campus Total</b>	(81)	(95)	(48)	(92)	(88)	(90)	(81)
Effective Placement Rate	93.2%	96.0%	91.2%	92.6%	92.4%	98.4%	92.2%
Employment Rate	85.5%	83.7%	84.3%	89.1%	92.4%	97.5%	92.2%
Continuing Education Rate	7.7%	12.4%	6.9%	3.5%	0.0%	0.9%	0.0%
<b>Worldwide</b>							
<b>Associate Degrees</b>	(37)	(36)	(32)	(54)	(54)	(57)	(42)
Effective Placement Rate	100.0%	95.1%	95.8%	94.7%	98.7%	100.0%	100.0%
Employment Rate	97.2%	95.1%	95.8%	91.6%	98.7%	98.1%	100.0%
Continuing Education Rate	2.8%	0.0%	0.0%	3.1%	0.0%	1.9%	0.0%
<b>Bachelor's Degrees</b>	(113)	(116)	(122)	(153)	(180)	(238)	(228)
Effective Placement Rate	98.0%	93.9%	98.3%	96.5%	98.1%	99.1%	98.7%
Employment Rate	97.3%	93.0%	97.6%	94.7%	95.8%	97.9%	98.1%
Continuing Education Rate	0.7%	0.9%	0.8%	1.8%	2.4%	1.2%	0.6%
<b>Master's Degrees</b>	(118)	(146)	(122)	(163)	(154)	(130)	(113)
Effective Placement Rate	99.0%	98.2%	97.1%	98.0%	97.8%	97.0%	99.0%
Employment Rate	99.0%	98.2%	96.2%	97.1%	97.0%	97.0%	99.0%
Continuing Education Rate	0.0%	0.0%	0.9%	0.9%	0.9%	0.0%	0.0%
<b>Campus Total</b>	(268)	(298)	(276)	(370)	(388)	(425)	(383)
Effective Placement Rate	98.5%	95.3%	97.8%	96.9%	98.0%	98.3%	98.9%
Employment Rate	97.8%	94.7%	97.1%	95.4%	96.4%	97.5%	98.6%
Continuing Education Rate	0.7%	0.6%	0.8%	1.5%	1.7%	0.8%	0.3%

<b>All Campuses (Combined)</b>	<b>2004</b>	<b>2003</b>	<b>2002</b>	<b>2001</b>	<b>2000</b>	<b>1999</b>	<b>1998</b>
<b>Associate Degrees</b>	(37)	(38)	(35)	(61)	(59)	(63)	(48)
Effective Placement Rate	100.0%	95.1%	96.2%	95.7%	99.0%	100.0%	100.0%
Employment Rate	97.2%	95.1%	95.5%	92.6%	95.0%	98.5%	97.2%
Continuing Education Rate	2.8%	0.0%	0.7%	3.2%	3.9%	1.5%	2.8%
<b>Bachelor's Degrees</b>	(354)	(416)	(318)	(474)	(465)	(523)	(462)
Effective Placement Rate	96.6%	94.3%	94.9%	95.0%	96.3%	97.6%	96.9%
Employment Rate	94.6%	90.7%	92.1%	92.2%	93.7%	96.2%	95.7%
Continuing Education Rate	1.9%	3.6%	2.7%	2.7%	2.5%	1.3%	1.2%
<b>Master's Degrees</b>	(145)	(163)	(139)	(183)	(179)	(152)	(130)
Effective Placement Rate	99.1%	97.8%	97.4%	97.6%	97.6%	96.6%	99.1%
Employment Rate	99.1%	97.5%	95.8%	96.8%	96.7%	96.6%	99.1%
Continuing Education Rate	0.0%	0.4%	1.6%	0.8%	0.9%	0.0%	0.0%
<b>University Total</b>	(536)	(617)	(492)	(718)	(703)	(738)	(640)
Effective Placement Rate	97.3%	95.2%	95.5%	95.7%	96.8%	97.4%	97.8%
Employment Rate	95.8%	94.2%	93.1%	93.5%	94.7%	96.4%	96.9%
Continuing Education Rate	1.5%	2.7%	2.4%	2.2%	2.1%	0.9%	0.9%

( ) Number of respondents

\* Too few respondents to report

NOTE: 1. Statistics are from respondents to the Alumni Survey one year after graduation.

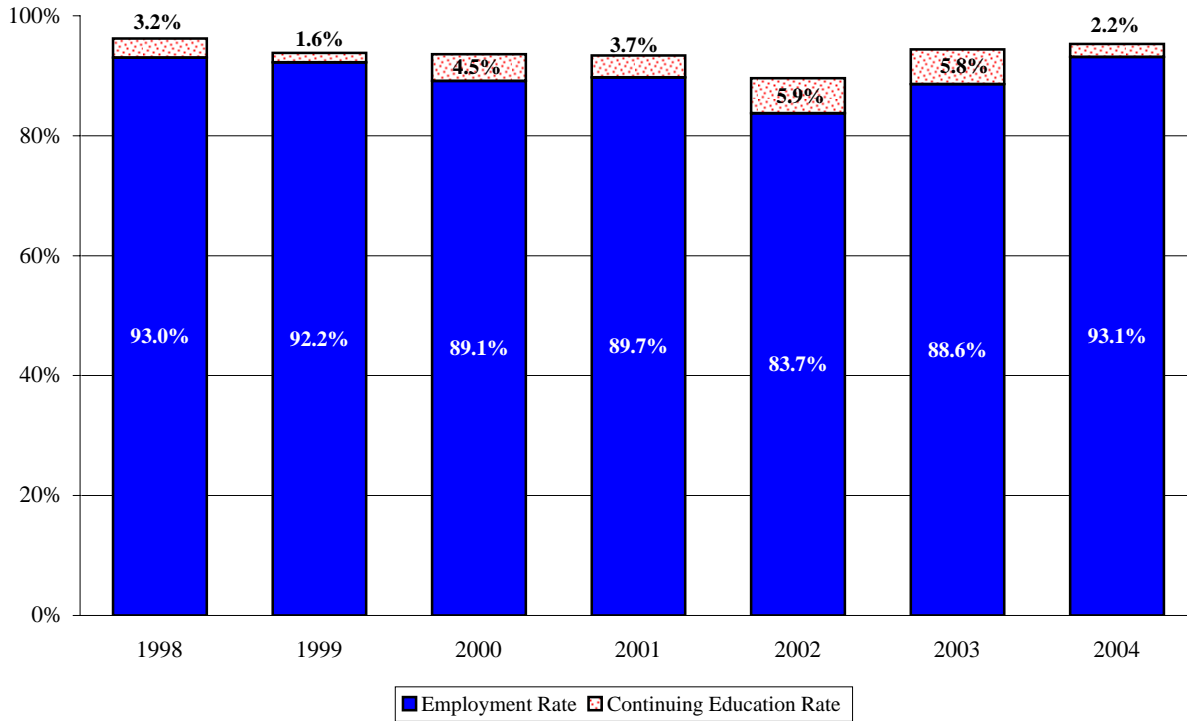
2. The effective placement rate consists of the employment rate (working at this time or accepted a job that will start soon) plus the continuing education rate (out of the work force due to continuing education). It is based upon only those who were eligible to be placed. Respondents who were neither seeking employment nor continuing their education, for any reason, were deemed ineligible and excluded from the calculations.

3. For statistics showing how many went on for a higher degree after graduation, see Alumni Fact Book section 'Pursuit of Higher Degree (One Year After Graduation)'.

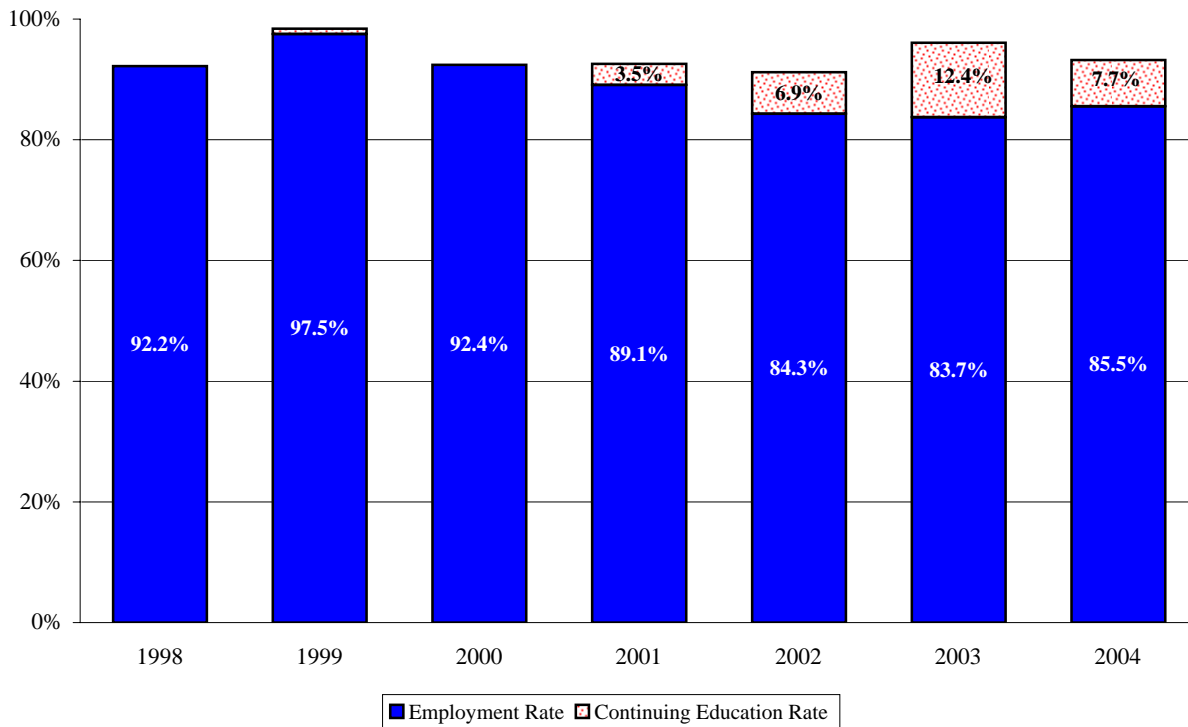
4. The data were statistically weighted to correct for disproportionate response rates and sampling so that the composition of the respondent group is representative of the targeted ERAU graduating class. ( ) number of respondents is unweighted, % number is weighted.

SOURCE: Office of Institutional Research

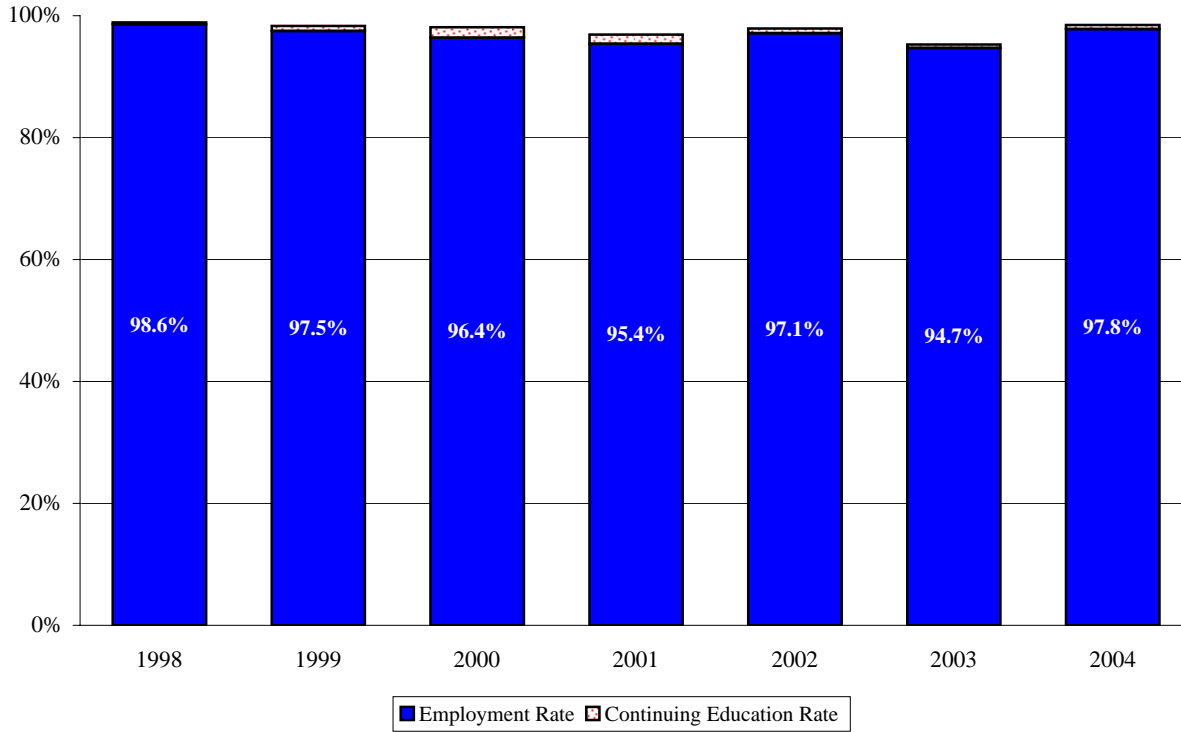
**EMBRY-RIDDLE AERONAUTICAL UNIVERSITY  
ALUMNI PLACEMENT RATE (ONE YEAR AFTER GRADUATION)  
Daytona Beach Campus - All Degrees**



**EMBRY-RIDDLE AERONAUTICAL UNIVERSITY  
ALUMNI PLACEMENT RATE (ONE YEAR AFTER GRADUATION)  
Prescott Campus - All Degrees**



**EMBRY-RIDDLE AERONAUTICAL UNIVERSITY  
ALUMNI PLACEMENT RATE (ONE YEAR AFTER GRADUATION)  
Worldwide - All Degrees**



**EMBRY-RIDDLE AERONAUTICAL UNIVERSITY  
ALUMNI PLACEMENT RATE (ONE YEAR AFTER GRADUATION)  
All Campuses - All Degrees**

